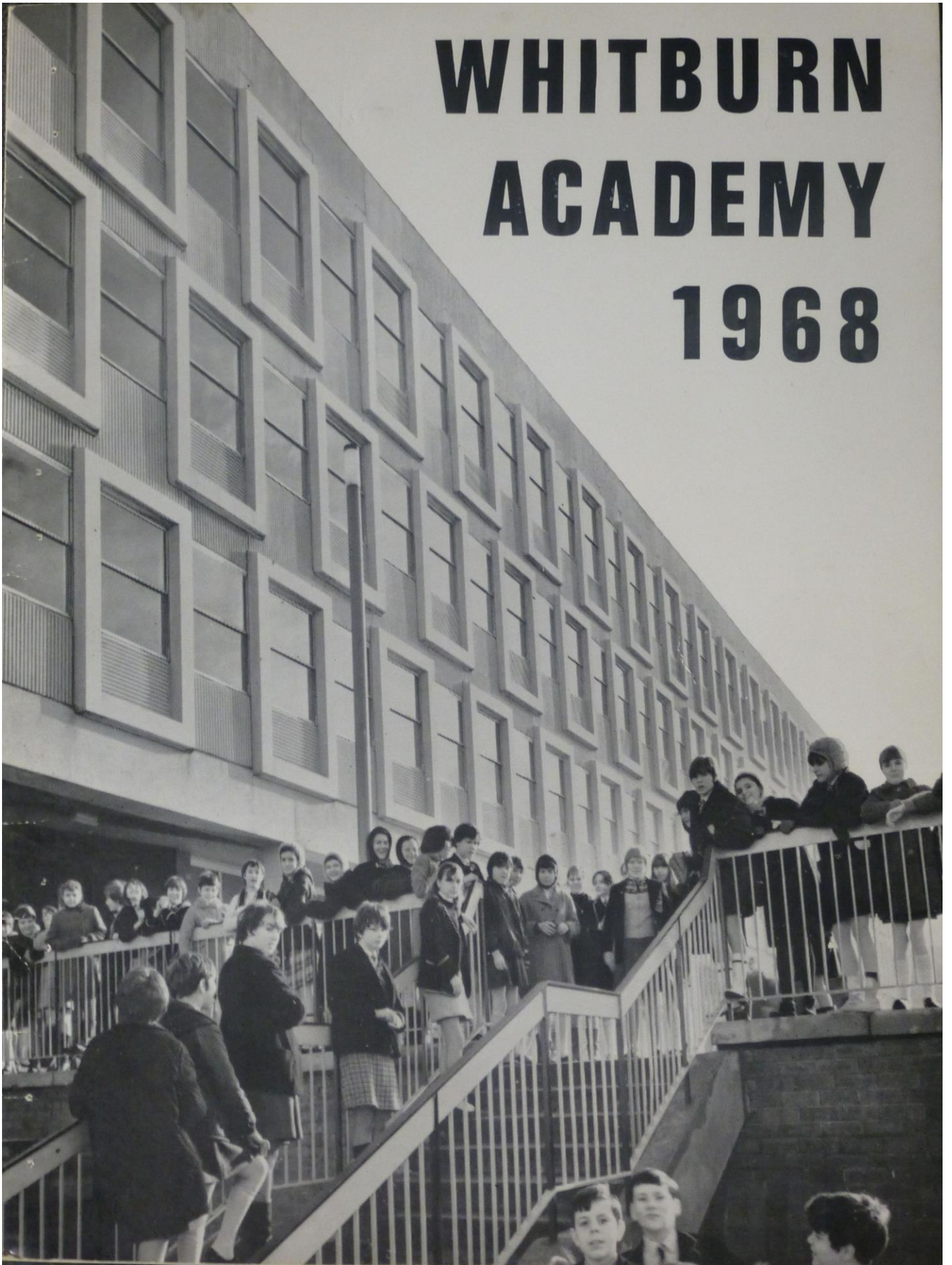


WHITBURN ACADEMY 1968





WEST LOTHIAN COUNTY COUNCIL EDUCATION COMMITTEE

WHITBURN ACADEMY

A souvenir of the occasion
of the formal opening of the
new Whitburn Academy by
PETER WALKER Esq., J.P. County Convener

OPENING CEREMONY PROGRAMME



Psalm 23

CHAIRMAN'S WELCOME	Gavin Howieson, Esq., J.P. Chairman of the Education Committee.
FORMAL OPENING	P. Walker, Esq., J.P., Convener of West Lothian County Council.
PRAYER OF DEDICATION	Rev. W. Hume, School Chaplain.
JUNIOR CHOIR	"All Through the Night"-Henry Geehl. "Come to the Fair"- Easthope Martin.
REMARKS	W. Brown, Esq., Provost of Whitburn. D. K. Somerville, Esq., M.A., Ph.D., Rector of Whitburn Academy.
SENIOR CHOIR	"The Jovial Beggar" -Alec Row- ley. "Non Nobis Domine"- Roger Quilter.
VOTE OF THANKS	James Boyle, Esq., J.P., Vice- Convener of West Lothian County Council.

Hymn 562

NATIONAL ANTHEM

BENEDICTION — Rev. W. McMartin

PSALM 23

The Lord's my shepherd I'll not want,
He makes me down to lie
In pastures green: He leadeth me
the quiet waters by.

My soul he doth restore again
and me to walk doth make,
Within the paths of righteousness
ev'n for his own name's sake.

Yea, though I walk in death's dark vale
Yet will I fear none ill;
For Thou art with me; and Thy rod
and staff me comfort still.

My table Thou hast furnished
in presence of my foes;
My head Thou dost with oil anoint,
and my cup overflows.

Goodness and mercy all my life
shall surely follow me;
And in God's house for evermore
my dwelling-place shall be.

Hymn 562

O God of Bethel! by whose hand
Thy people still are fed;
Who through this weary pilgrimage
Hast all our fathers led:

Our vows, our prayers, we now present
Before Thy throne of grace:
God of our fathers! be the God
Of their succeeding race.

Through each perplexing path of life
Our wandering footsteps guide;
Give us each day our daily bread,
And raiment fit provide.

O spread Thy covering wings around,
Till all our wanderings cease,
And at our Father's loved abode
Our souls arrive in peace.

Such blessings from Thy gracious hand
Our humble prayers implore;
And Thou shalt be our chosen God,
And portion evermore.

Amen.

HISTORICAL NOTE

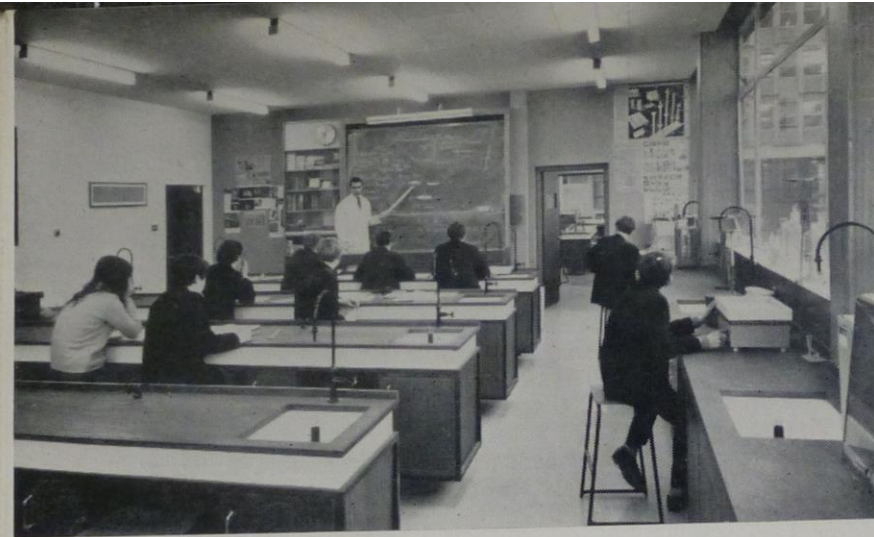
The earliest reference to Whitburn so far discovered relates to the granting of the lands of "Whytbourne" in 1365 by King David II to a nobleman named Forrester.

The earliest description of the village which is found in the First Statistical Account of 1796, indicates that Whitburn was a village of 500 souls situated at the intersection of the Edinburgh-Glasgow and Bo'ness-Cleugh roads. It was an agricultural community with 20 weavers working in their cottages for the Glasgow and Lanark markets, a cotton manufactory employing 30 or 40 hands, 50 young people engaged in embroidering muslin for Glasgow, three churches and one school. The Whitburn carriers are mentioned as transporting grain from Leith and Dalkeith to Glasgow and returning laden with pig iron from America; and as carrying merchandise from Bo'ness to Lanark and the South.

It would appear that there were geographical, economic and religious reasons for the establishment of the village and its growth since the early eighteenth century. It is situated at the eastern end of what was marshy, moss land, once a refuge of the Covenanters, who may have sought food at Whitburn, and it bestrides two important routes—East to West and North to South; it attracted to its new weaving industry cottars displaced by a new system of farming (enclosure of land); it had succeeded after a struggle in gaining its own place of worship and thereby forging a community spirit. Naturally, the houses which required to be well lit for weaving, were built with the crossroads and the church as the nucleus. It is considered that mining of iron-stone and coal, although started at Benhar in the early eighteenth century and continued in the area of Whitburn e.g. at Greenrigg, Polkemmet and Torbanehill, but not Whitburn itself, was not an immediate cause of the growth of the village. Whitburn, which became a burgh in 1850 continued to grow during the twentieth century at the moment is engaged in further development with the building of new houses and a shopping centre, and the attraction of industry to the area.

With the regard to education it is notable that from 1786 to 1816 there was a small Theological College at Whitburn under the Rev. A. Bruce. The first mention of a school is found in the Kirk Session Minutes. On 23rd July, 1733 the Session "finding it necessary to have one fit to teach a Grammar school in the place . . . did unanimously choose Mr Wiliam Campbell to be their Clerk and to present and teach a school on the place having the emoluments for his encouragement until Providence shall give some better fund." The school building was constructed in 1735. In 1825 Mr. Samuel Greenshields, the dominie, reported that there were 50 children in his school and a total of 70 pupils in two schools endowed by a Whitburn merchant at Fauldhouse and Whitdalehead. There were also two private schools which might have been "Dame" schools or schools provided by local industry. Under the Act of 1872 the School Board became responsible for the schools of the parish and also for the endowed schools in 1880. Control subsequently passed to the Education Committee. It was the building at Whitdalehead which, with extensions, served as Whitburn Junior Secondary School for many years; other pupils from Whitburn went to Bathgate Academy and Lindsay High School for their secondary schooling.

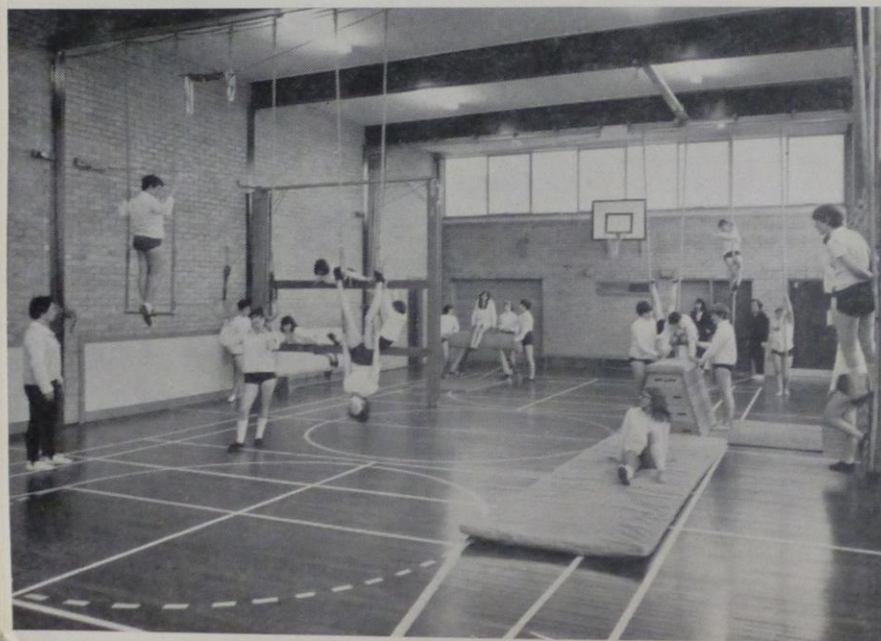
The opening of Whitburn Academy with its modern facilities for comprehensive education marks a further step in the development of the town. Whitburn now has its own Academy and can look forward with assurance to a period of educational advancement greater than any in its long history.

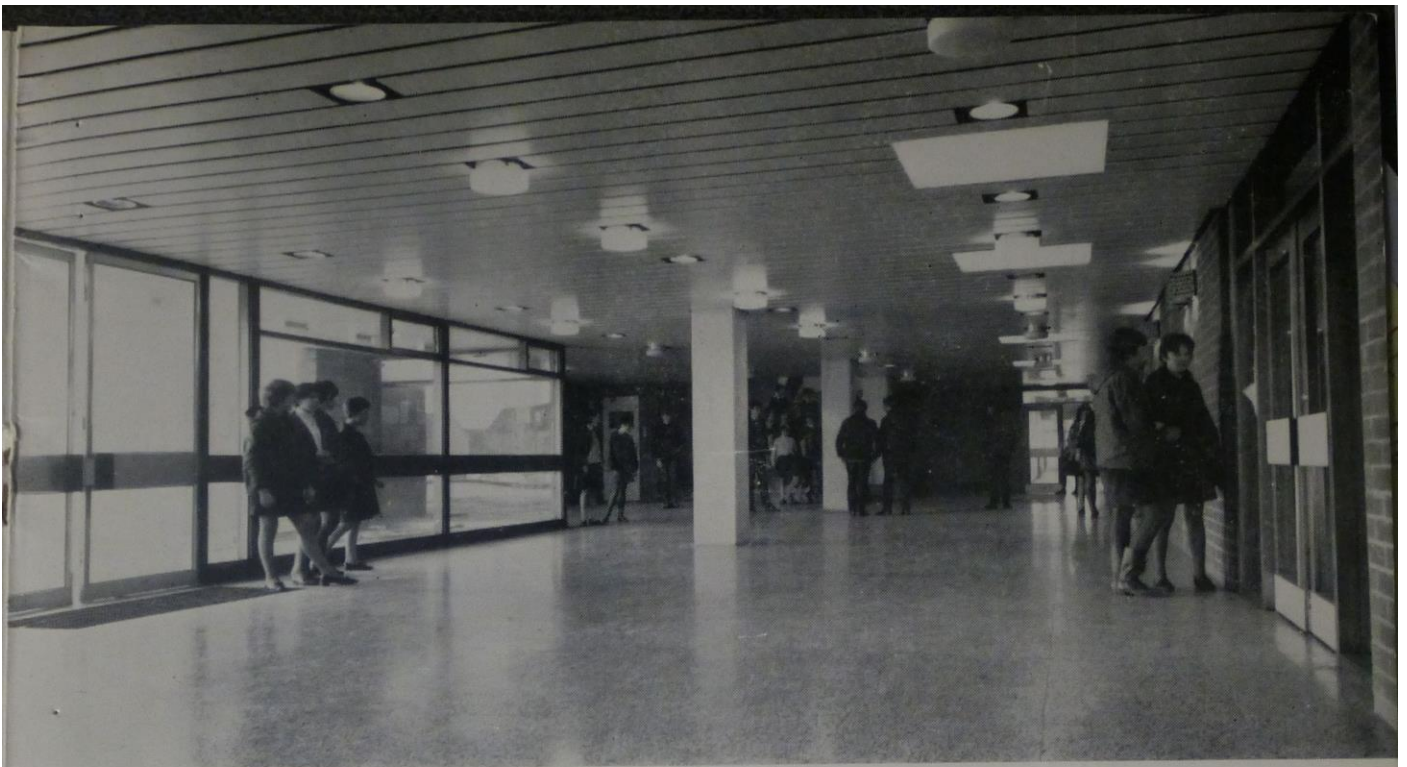


1. Chemistry Laboratory

2. Woodwork Room

3. Girls' Gymnasium





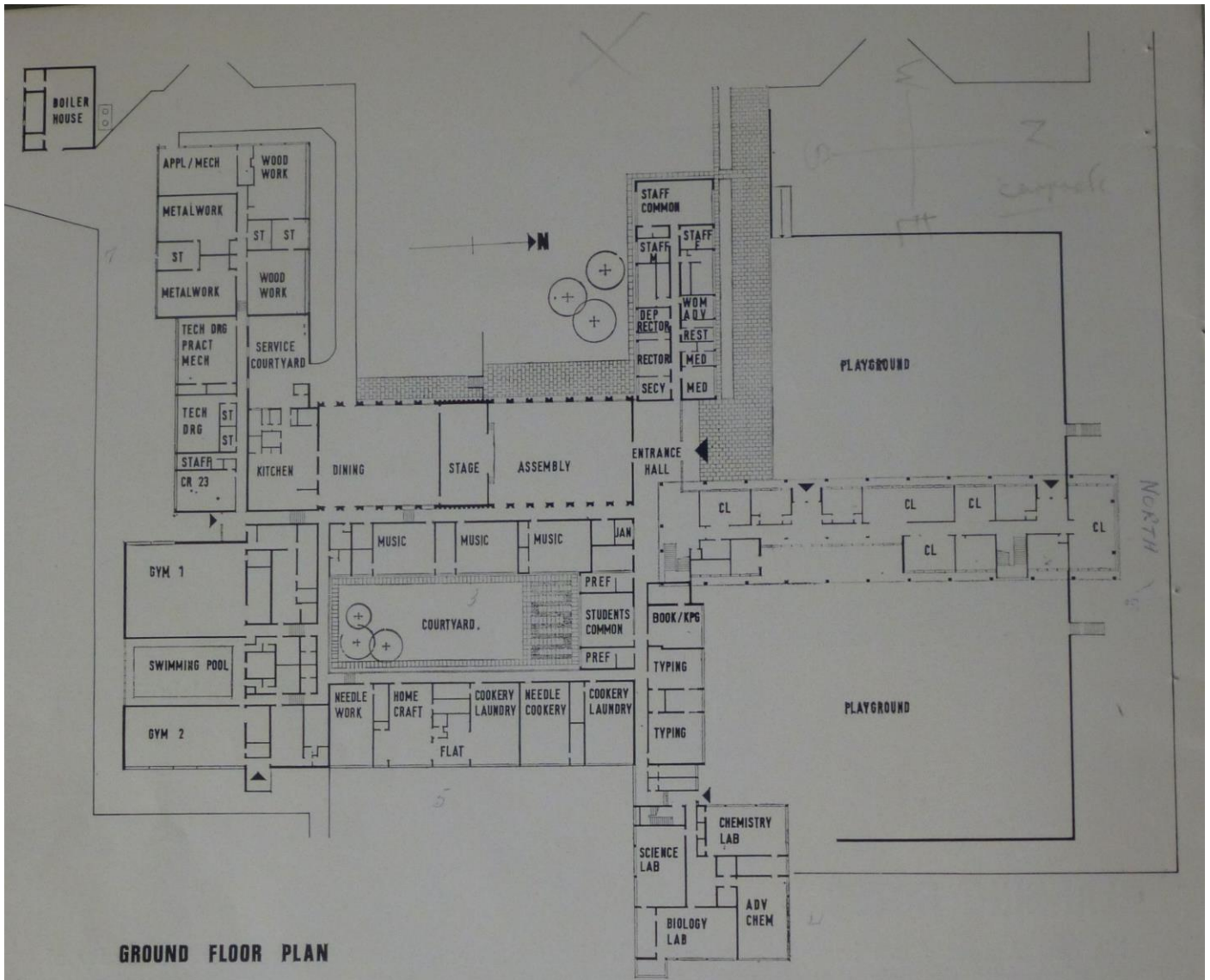
Main Entrance Hall

PLANNING NOTES

This new Academy has been built on a north sloping, 18 acre site at the north-east extremity of Whitburn, with the new M.8 motorway forming the south boundary. Vehicular and pedestrian access to the School is gained from Shanks Road on the west boundary. Ample car parking space is provided and care has been taken to segregate vehicles and pedestrians within the School grounds. The main Entrance Hall is the hub of the plan from which the important circulation routes radiate. The dominating feature of the School is the 4-storey Classroom Block containing all the teaching classrooms, Art and Geography Departments and Library. In the Art-craft Department, a pottery room has been included with a large kiln and electrically operated potter's wheels, while in the Geography Department, a special tank is incorporated for studying the action of tides and rivers. Both the Art and Geography Rooms on the top floor command fine views of the surrounding countryside. The up-to-date Library possesses extensive book shelving, and, in addition, features teaching space with study bay and bench seating at the window walls. The Language Department contains a language laboratory which enables the latest teaching methods to be employed.

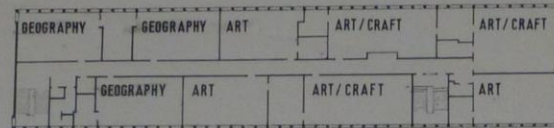
Boys and girls have their own entrances on the ground floor of this block, together with lavatory and cloakroom facilities. The Administration offices are housed in a single storey structure leading directly off the Entrance Hall. Staff Common Rooms and Medical Suite are also accommodated in this wing.

The large Assembly Hall is entered directly off the Entrance Hall. In addition to the stage curtains, there are full-height curtains on both long walls contrasting pleasantly with the facing brick which is used as the internal finish, and the agba hardwood acoustic canopy and West African iroko flooring give richness to the interior.

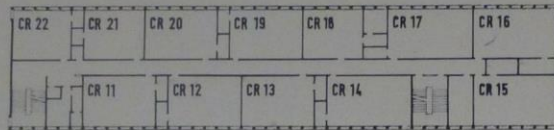


GROUND FLOOR PLAN

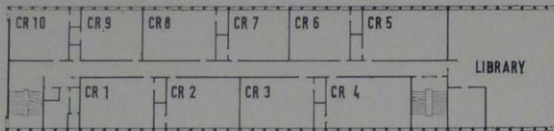
The Stage, which is fully equipped for Theatrical productions, is adjacent to, and at the same floor level as the Dining Hall. 600 pupils can lunch in School (in two sittings) with appetising meals produced in the modern all-electric kitchen. The three Music Rooms are conveniently situated across the corridor from the Assembly Hall and Stage. With their windows looking out into the Central courtyard, they are well isolated acoustically from other teaching rooms.



THIRD FLOOR

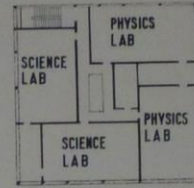


SECOND FLOOR

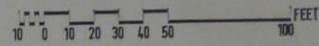


FIRST FLOOR

UPPER FLOOR PLANS



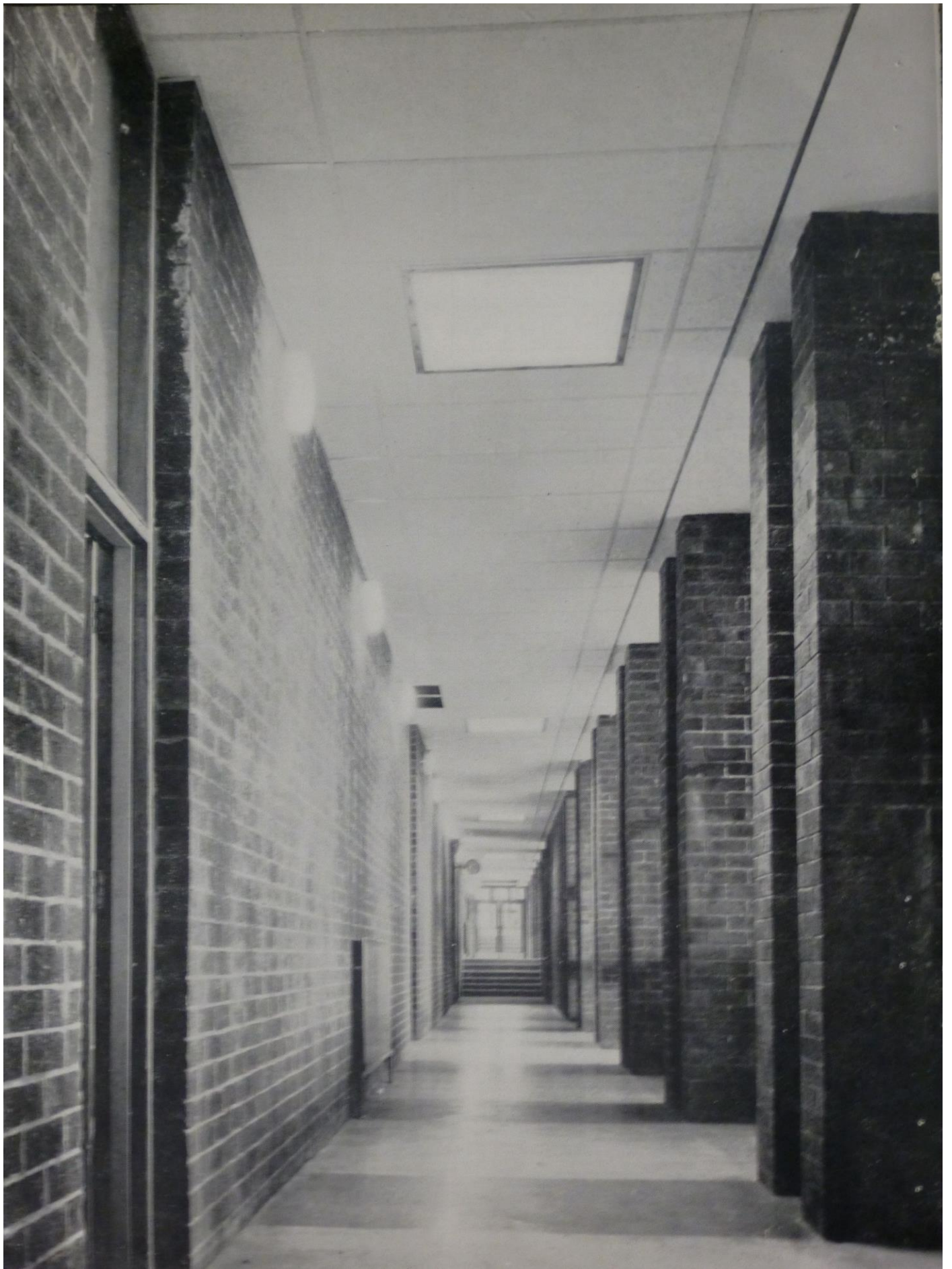
**FIRST FLOOR
SCIENCE BLOCK**



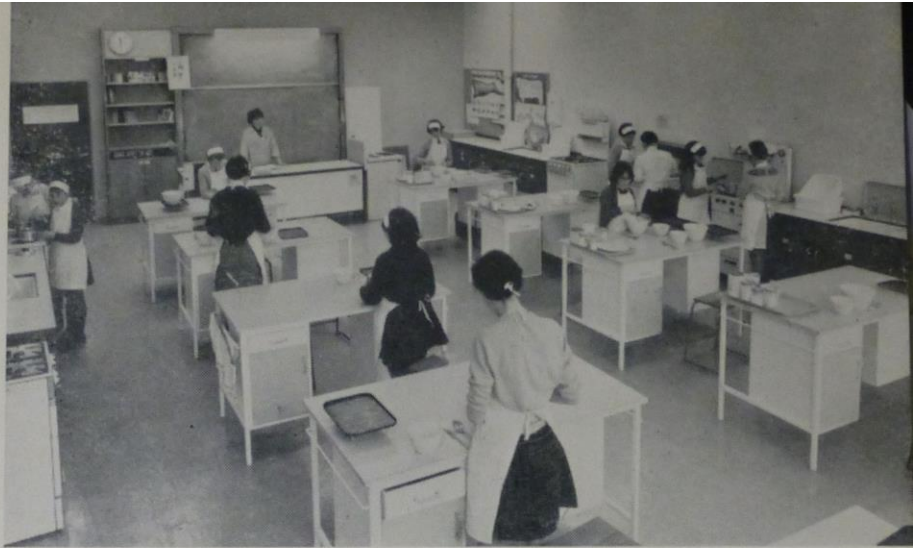
The Courtyard, at the core of the plan, is a sheltered sun-trap landscaped simply with grass, trees and textured paving slabs. The Students common room, near the entrance hall, has access to this courtyard which will serve as a pleasant outdoor relaxation area.

The comprehensively equipped Technical Rooms have been placed at the south-west corner to ensure that the occasional noisy activity will not disturb other classes. Physical Education is catered for in the Gymnasia and Swimming Pool Block which contains the spacious Boys' Gym. (2,800 sq. ft.) and the Girls' Gym. (1,800 sq. ft.) and the teaching pool. The Gymnasia have facilities for games such as netball, basketball, and badminton. In addition to these indoor activities, three football pitches, three hockey pitches and three tennis courts are provided in the playing fields. Two of these pitches are surfaced in blaes for all-weather playing. The Domestic Science Department is situated on the east side of the Central Courtyard. The Commercial Department, containing two fully equipped typing rooms, book-keeping room and "officette", completes the north side of the courtyard. The Science Department is designed as a self-contained, two-storey block of eight Laboratories with ancillary rooms and is situated at the end of the corridor radiating eastwards from the Main Entrance Hall.

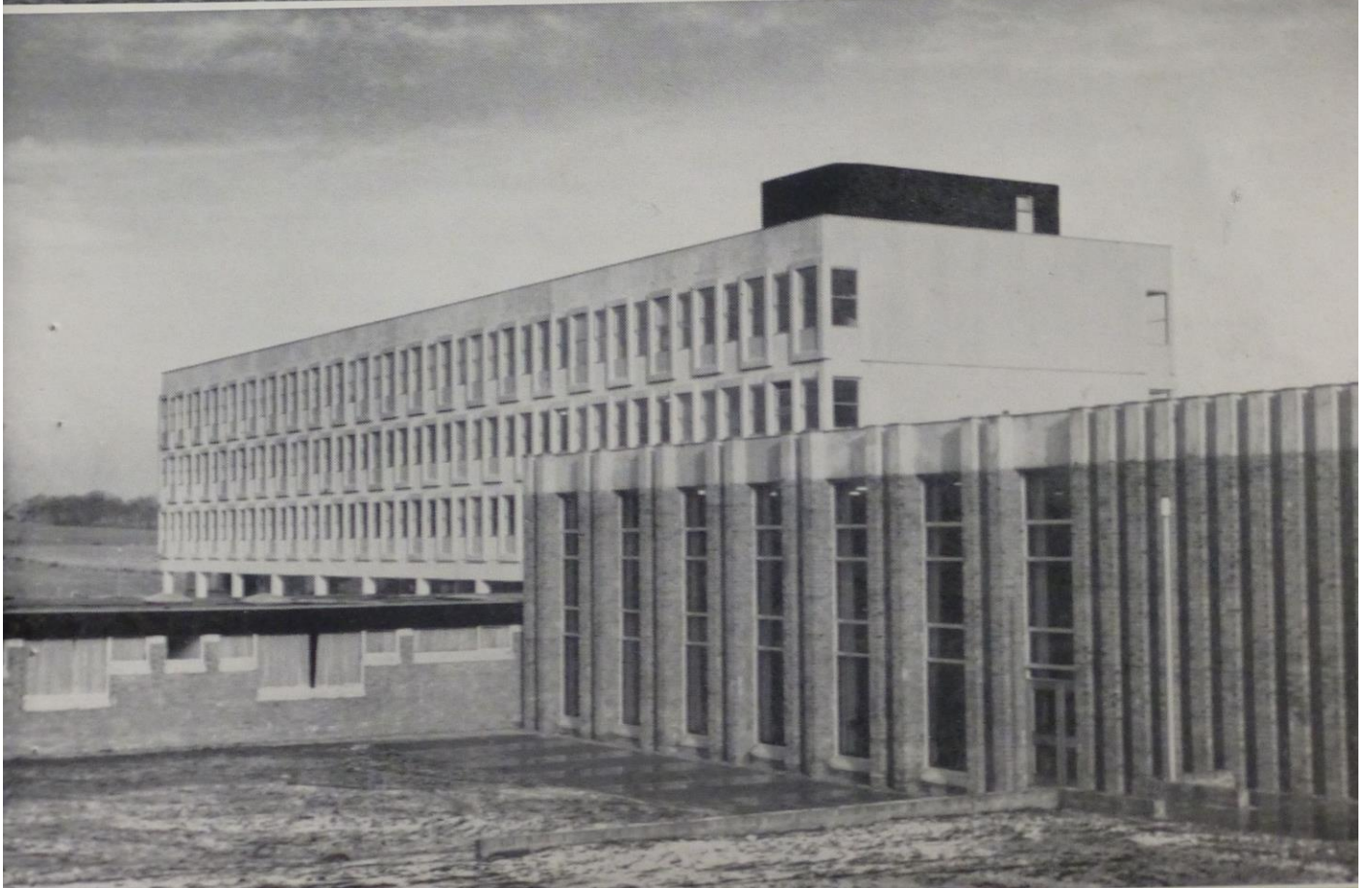
The Boiler House has been built as a separate unit close to Shanks Road at the south west corner of the site providing easy access for fuel lorries and minimising disturbance from noise and dust. The two boilers are coal-fired with automatic stokers. An underground duct connects the Boiler House with the main duct system which, in addition to heating pipes, carries all the essential services to the various parts of the school.



- 1. Cookery/Laundry room in the Homecraft Department
- 2. Library
- 3. One of the Art Rooms









DESIGN AND STRUCTURE NOTES

The Building embodies a unique combination of "traditional" and "industrialised" building techniques. In general, the specialist teaching units are traditional single storey of brick load-bearing construction except for the Science Block and Gymnasia complex which are concrete framed and steel framed structures respectively. The main classroom block, 225 feet long and 50 feet wide, is of novel construction for the top three storeys. The pre-cast concrete units which form the outer walls were designed by the architects working closely with the specialist contractor who manufactured them in a nearby factory under carefully controlled conditions. They were transported to the site according to a pre-planned schedule, and lifted into place by a mobile crane at a rate of one floor per month. A lively pattern is produced by virtue of the unusual juxtaposition of the individual units arising from the structural technique employed. Pre-formed fibreglass moulds produced an interesting ribbed pattern on the panels and the surface of each unit has been acid etched to expose the Creetown granite aggregate and give a self-cleansing, sparkling finish.

All other exterior and many interior walls have been built of a durable, textured brick imparting to the building a warmth, consistency and toughness of character.

A variety of floor finishes are used throughout the building—Terrazzo in the Entrance Hall and Staircases for hard wear; Vinyl tiles in the Corridors and Classrooms; Hardwood block flooring in the technical areas; non-slip clay tiles in the showers and pool surrounds; cork-backed vinyl in the Library for quietness and hardwood strip flooring in the Gymnasia and Assembly and Dining Halls.

WHITBURN ACADEMY

ARCHITECTS

Wheeler & Sproson

Partner in Charge

Donald McInnes D.A. (Edin) A.R.I.B.A.
A.R.I.A.S.

QUANTITY SURVEYORS

James Gentles & Son

STRUCTURAL CONSULTANTS

T. Harley, Haddow & Partners

ELECTRICAL CONSULTANTS

Ian Hunter & Partners

CLERK OF WORKS

Mr. J. Hooper

MAIN CONTRACTOR

Robert Paterson & Sons Ltd., Airdrie

CONTRACT AMOUNT

£570,365

SUB-CONTRACTORS

OTHER CONTRACTORS

Classroom Block Structure (1st, 2nd and 3rd Floors)—

John Laing & Co. Ltd., Glasgow.

Joinerwork—James Laidlaw & Son, Ltd., Rutherglen.

Plumberwork—Hugh Twaddle & Son, Ltd., Edinburgh.

Electrical—E. J. Steill Ltd., Edinburgh.

Heating—G. N. Haden Ltd., Edinburgh.

Plasterwork—Matthew Thom & Co. Ltd., Airdrie.

Roofing—William Briggs & Son, Edinburgh.

Piling—West's Piling & Construction Ltd., Slough.

Metal Windows—Crittall Manuf. Co. Ltd., Glasgow.

Painterwork—Oates & Forsyth, Lochgelly.

Built-in Furniture—Thomas Justice & Son, Ltd.,
Dundee.

Tilerwork—Toffolo Jackson & Co. Ltd., Glasgow.

Glazierwork—The Scottish National Glass & Glazing
Co. Ltd., Glasgow.

A.M.A.S.C.O., Edinburgh.

Maxwell Hart Ltd., Edinburgh.

Otis Ltd., Edinburgh.

Wilson & Garden Ltd., Kilsyth.

A. M. McDougal & Son. Ltd., Glasgow.

R. F. Morrison Ltd., Glasgow.

P. W. McLellan Ltd., Edinburgh.

C. E. Bastow Ltd., Edinburgh.

Gymnastic Engineering Co. Ltd.,

Stage Furnishings Ltd., Glasgow.

Terrapin Reska Ltd.

United Filters Ltd.

Photographs by G. W. HARVEY, Leven, Fife.